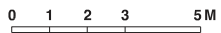


Upper Level

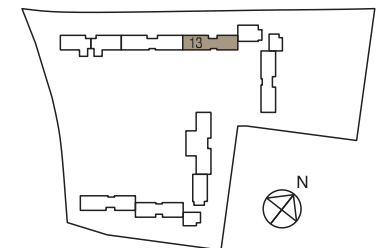


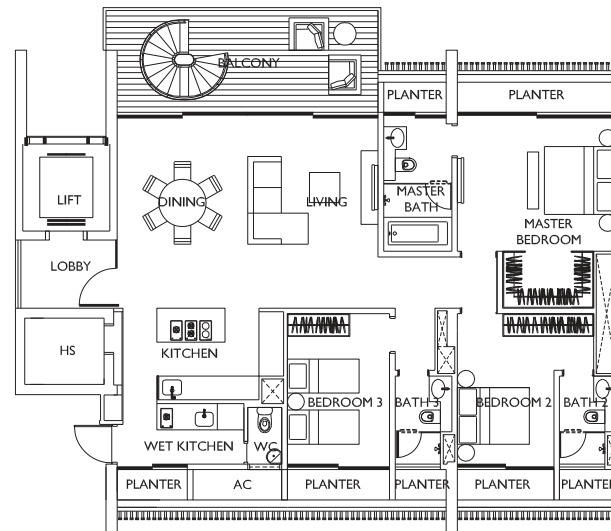
BUILDING PLAN REF. : A1576-00143-2006-BP01
 APPROVAL REF. : ES20070907-58734
 APPROVAL DATE : 19 SEP 2007

BUILDING PLAN REF. : A1576-00143-2006-BP02
 APPROVAL REF. : ES20110913-65054
 APPROVAL DATE : 22 SEP 2011

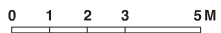
BUILDING PLAN REF. : A1576-00143-2006-BP03
 APPROVAL REF. : ES20120920-65922
 APPROVAL DATE : 28 SEP 2012

All areas stated herein include PES, private lobbies, a/c ledges, planters, balconies, cabanas, roof terrace, open terrace and voids where applicable. All areas and measurements stated herein are approximate and subject to adjustment on final survey. Layout/Location of wardrobes, kitchen cabinets, fan coil units, electrical points, door swing positions and plaster ceiling boards are subject to Architect's sole discretion and final design.





Lower Level

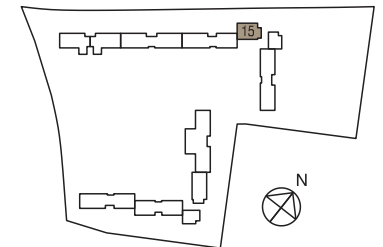


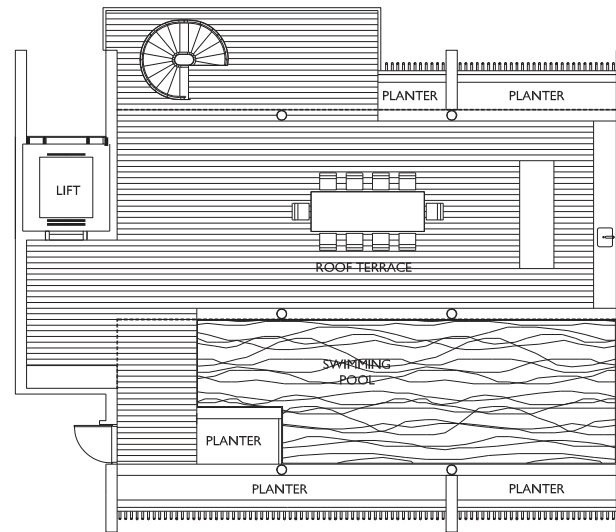
BUILDING PLAN REF. : A1576-00143-2006-BP01
 APPROVAL REF. : ES20070907-58734
 APPROVAL DATE : 19 SEP 2007

BUILDING PLAN REF. : A1576-00143-2006-BP02
 APPROVAL REF. : ES20110913-65054
 APPROVAL DATE : 22 SEP 2011

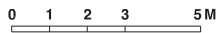
BUILDING PLAN REF. : A1576-00143-2006-BP03
 APPROVAL REF. : ES20120920-65922
 APPROVAL DATE : 28 SEP 2012

All areas stated herein include PES, private lobbies, a/c ledges, planters, balconies, cabanas, roof terrace, open terrace and voids where applicable. All areas and measurements stated herein are approximate and subject to adjustment on final survey. Layout/Location of wardrobes, kitchen cabinets, fan coil units, electrical points, door swing positions and plaster ceiling boards are subject to Architect's sole discretion and final design.





Upper Level

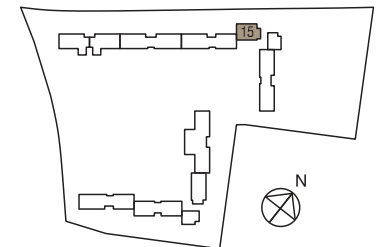


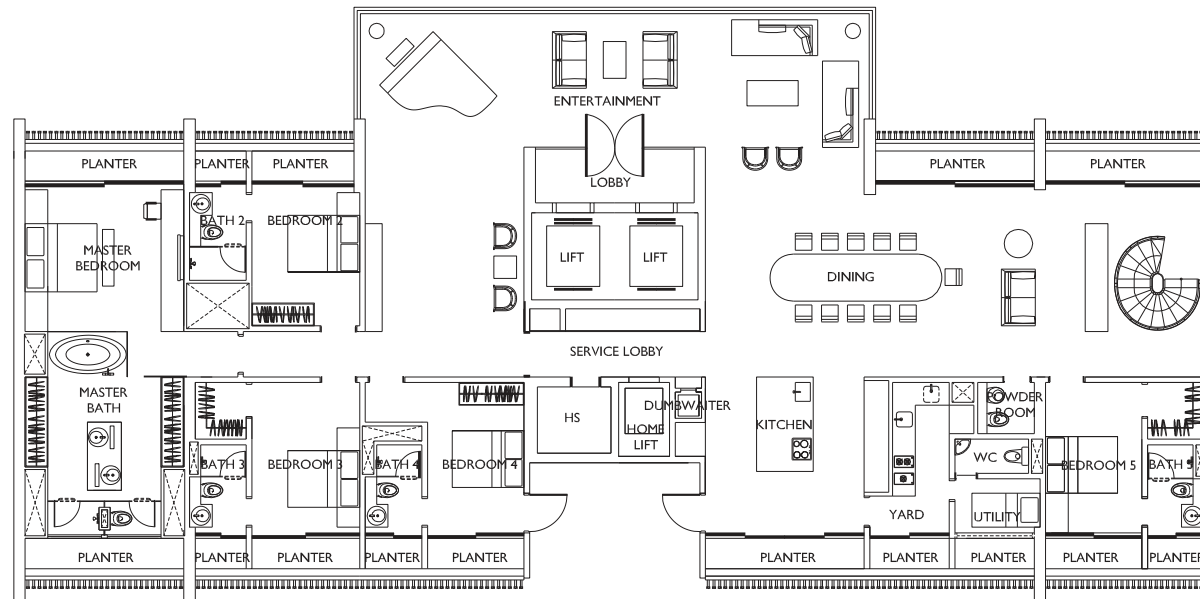
BUILDING PLAN REF. : A1576-00143-2006-BP01
 APPROVAL REF. : ES20070907-58734
 APPROVAL DATE : 19 SEP 2007

BUILDING PLAN REF. : A1576-00143-2006-BP02
 APPROVAL REF. : ES20110913-65054
 APPROVAL DATE : 22 SEP 2011

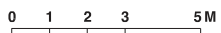
BUILDING PLAN REF. : A1576-00143-2006-BP03
 APPROVAL REF. : ES20120920-65922
 APPROVAL DATE : 28 SEP 2012

All areas stated herein include PES, private lobbies, a/c ledges, planters, balconies, cabanas, roof terrace, open terrace and voids where applicable. All areas and measurements stated herein are approximate and subject to adjustment on final survey. Layout/Location of wardrobes, kitchen cabinets, fan coil units, electrical points, door swing positions and plaster ceiling boards are subject to Architect's sole discretion and final design.





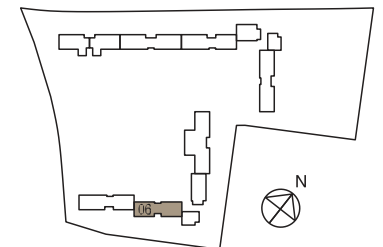
Lower Level



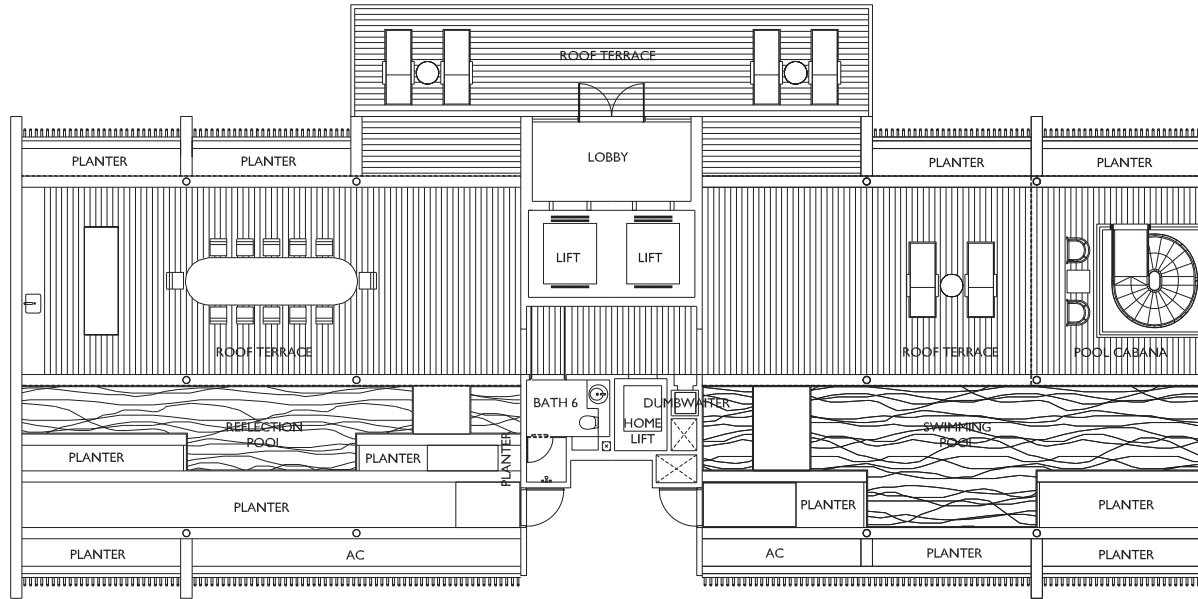
BUILDING PLAN REF. : A1576-00143-2006-BP01
 APPROVAL REF. : ES20070907-58734
 APPROVAL DATE : 19 SEP 2007

BUILDING PLAN REF. : A1576-00143-2006-BP02
 APPROVAL REF. : ES20110913-65054
 APPROVAL DATE : 22 SEP 2011

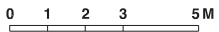
BUILDING PLAN REF. : A1576-00143-2006-BP03
 APPROVAL REF. : ES20120920-65922
 APPROVAL DATE : 28 SEP 2012



All areas stated herein include PES, private lobbies, a/c ledges, planters, balconies, cabanas, roof terrace, open terrace and voids where applicable. All areas and measurements stated herein are approximate and subject to adjustment on final survey. Layout/Location of wardrobes, kitchen cabinets, fan coil units, electrical points, door swing positions and plaster ceiling boards are subject to Architect's sole discretion and final design.



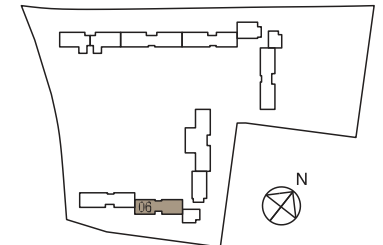
Upper Level



BUILDING PLAN REF. : A1576-00143-2006-BP01
APPROVAL REF. : ES20070907-58734
APPROVAL DATE : 19 SEP 2007

BUILDING PLAN REF. : A1576-00143-2006-BP02
APPROVAL REF. : ES20110913-65054
APPROVAL DATE : 22 SEP 2011

BUILDING PLAN REF. : A1576-00143-2006-BP03
APPROVAL REF. : ES20120920-65922
APPROVAL DATE : 28 SEP 2012



All areas stated herein include PES, private lobbies, a/c ledges, planters, balconies, cabanas, roof terrace, open terrace and voids where applicable. All areas and measurements stated herein are approximate and subject to adjustment on final survey. Layout/Location of wardrobes, kitchen cabinets, fan coil units, electrical points, door swing positions and plaster ceiling boards are subject to Architect's sole discretion and final design.